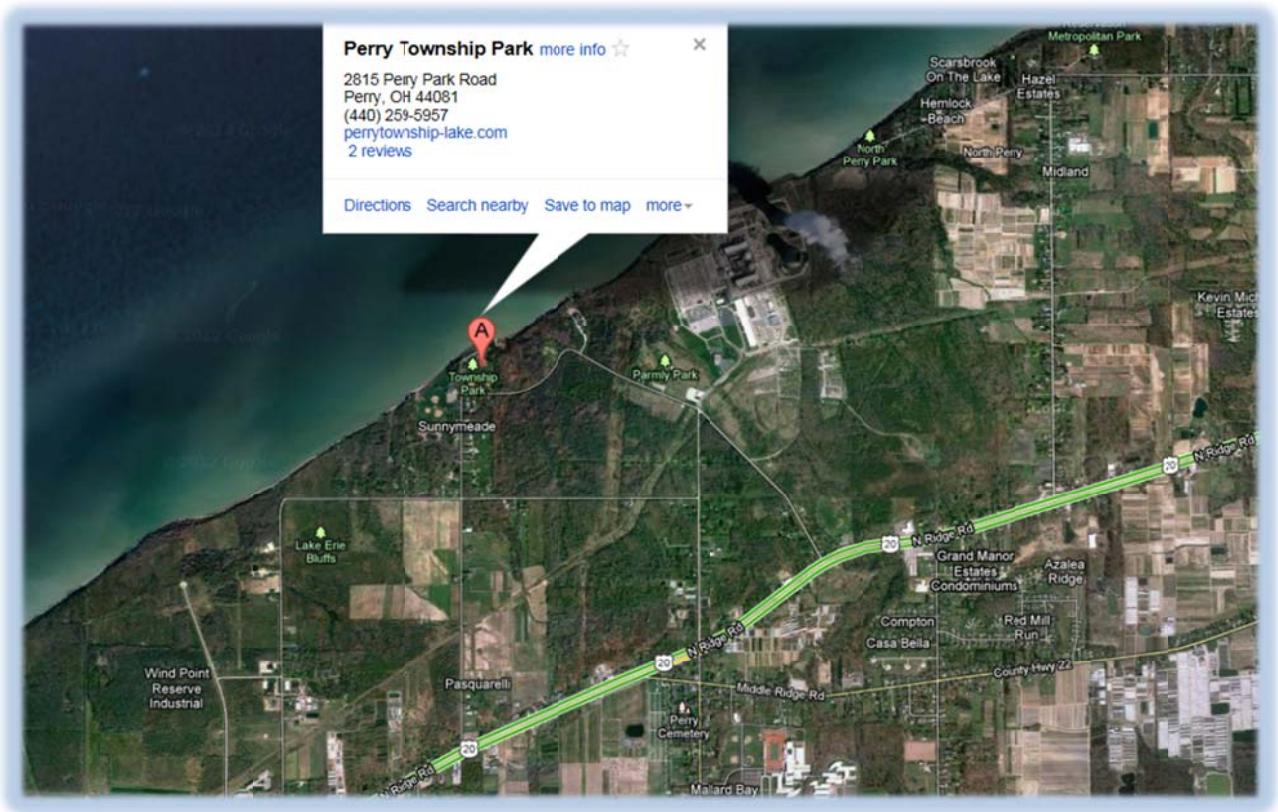


Slopes We Fly in Northern Ohio

The descriptions start with the wind direction required.



NW – Perry Township Park

On the Lake Erie coast, 2800 Perry Park Road Perry, OH 44081

Slope flying with a country club feel, nice cut grass, drive up parking, pavilion. It's a very easy and relaxed place to fly. Not our tallest hill, but one of our most beautiful places to fly.

[Video from the slope](#)

[Directions to the slope](#)

Latitude, Longitude
41.795448,-81.163012

Slopes We Fly in Northern Ohio



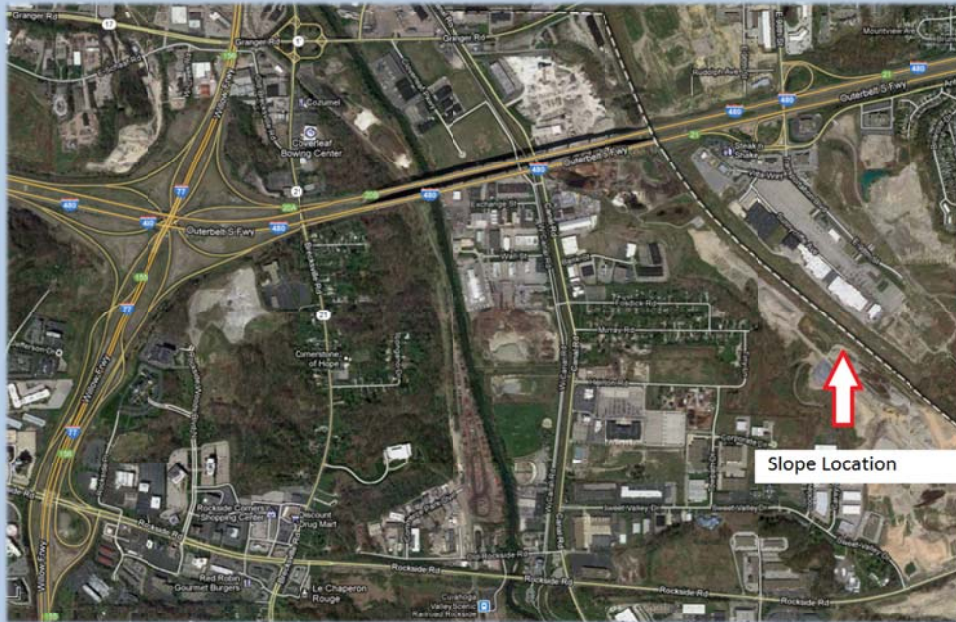
NE - Edgewater Park:

On the Lake Erie coast, located in Cleveland, the slope is at the west end of the park on Cliff Dr., just off the end of West Blvd. A Metro Slope, fly with a buddy and keep your gear in front of you or in your locked car. Nice smooth and consistent lift. LZs are tight and boxed in with trees. Close parking.

Video from the slope

Directions to the slope

Slopes We Fly in Northern Ohio



SW - City View

5744 Transportation Boulevard, Garfield Heights, OH 44125.

This is our club's main slope as it is the prevailing wind direction. It is our tallest one too, about 330' up from the valley. On a sunny day we get plenty of cycling with thermals coming through. This is a metro slope and is located behind the Giant Eagle grocery store. Drive up parking, you can actually sit on the fender of your car and fly. We were instructed to keep the cars on the pavement. To fly in front of the largest LZ you need to walk south of the Giant Eagle along the slope (about 200'-400').

There are several restaurants and a Starbucks at the north end of the slope. The LZ at the south end is (very big) an abandoned Home Depot construction site, partially developed for the parking lot, mostly clear, but rough. Walk the landing area so you know what you will be landing your plane into. This is one of the best slopes in the country, it's our best high wind hill too, the lift doesn't compress until the upper 40s' mph winds. We also have the potential for several flight lines because the slope area we can use is about a half a mile wide. If the wind shifts WSW we can move to the north end of the slope. If it goes West we can move

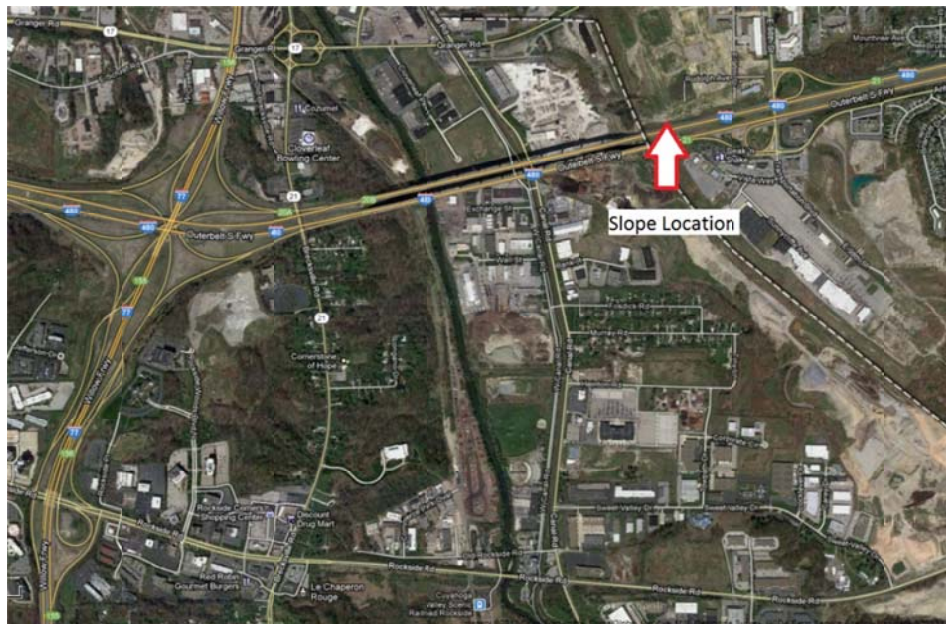
Slopes We Fly in Northern Ohio

further north on the slope to the other side of I480 (Bridge View). This gives us about a mile and a quarter of slope to use at this location. Oh, and we have flown a south wind at the south end, it's not great lift, but if it's sunny and you mix in the strong thermals, you have some good flying.

The convenience attributes are sweet with close access to the highway, you drive in at the top of the slope, prevailing wind, and there are restaurants and a Starbucks at the north end of the slope. There is even an Applebee's on the slope.... with draft beer too.

Video from the slope

Directions to the slope

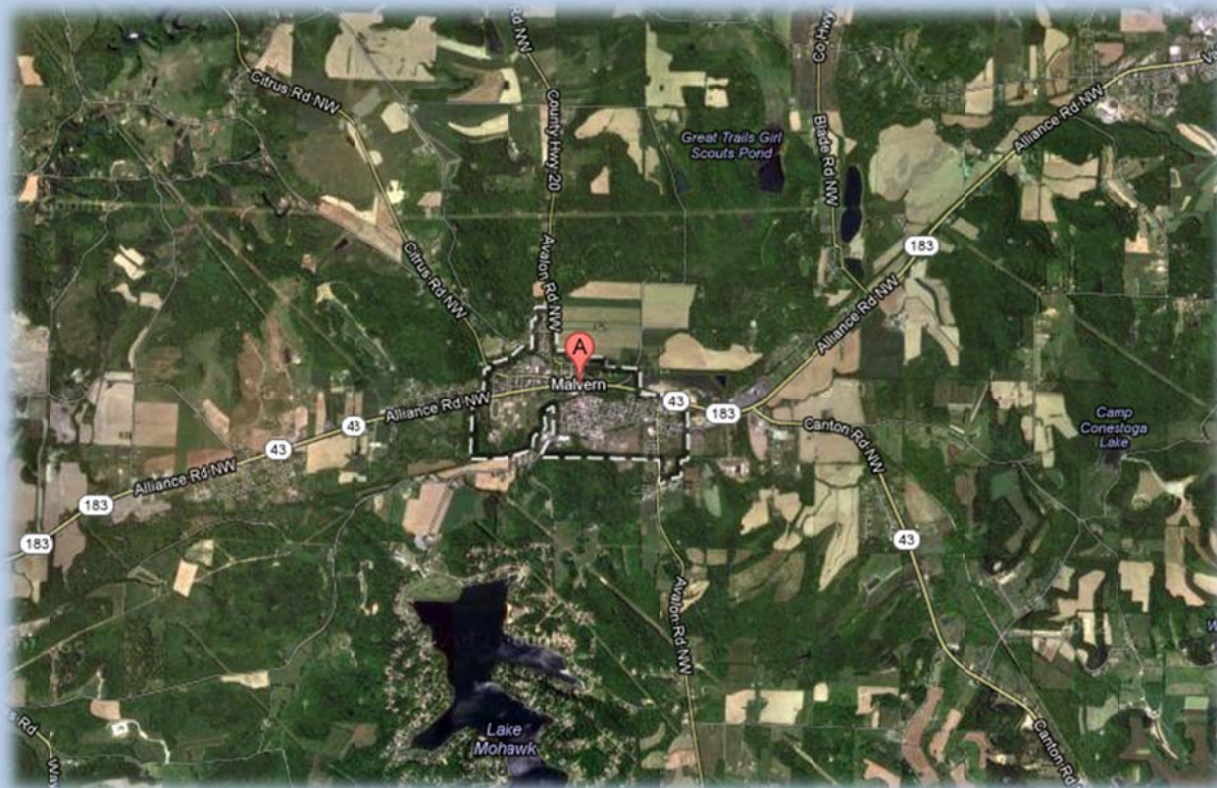


W – Bridge View:

A quarter mile north of the City View Slope off
Transportation Blvd. in Garfield Heights

Slopes We Fly in Northern Ohio

These are the other locales in the region.



SW, S, SSE – The Farm

Laredo Rd., Malvern, OH.

This is private property and you need to be a NCSA member to fly there. Practice your country two step before you arrive at this site. You're at the bottom and need to hike across a 100 yard active (yes that means cow pies) pasture before you start the 330' ascent. The slope is a big beautiful bowl with a great approach, making superb lift with an expansive soaring space and an open landing area for big gliders. Cattle might be crossing the slope while you are flying. Keep an eye out for the bull, he is very docile, but the owners said don't keep your back to him. Watch him, move across the slope and be sure to give him space.

Video from the slope

Google Map near the slope

This slope was part of a coal mine operation decades ago, it is perfectly west and has a perfectly straight form. The wind has a clean approach over a river valley and this slope produces lift very efficiently. It is all private property three different owners, NCSA members only and small groups (two cars max).

Google Map near the slope

Slopes We Fly in Northern Ohio



NW, SE – Dillon Dam State Park

A DS site, NW wind is preferred for DSing, the dam has an enormous back side LZ of cut grass.

Google Map near the slope

Hotel and Restaurant links near the various flying locations

Peppermill restaurant link

Richfield Hotel accommodations link

Brecksville accommodations link

Mentor accommodations link

